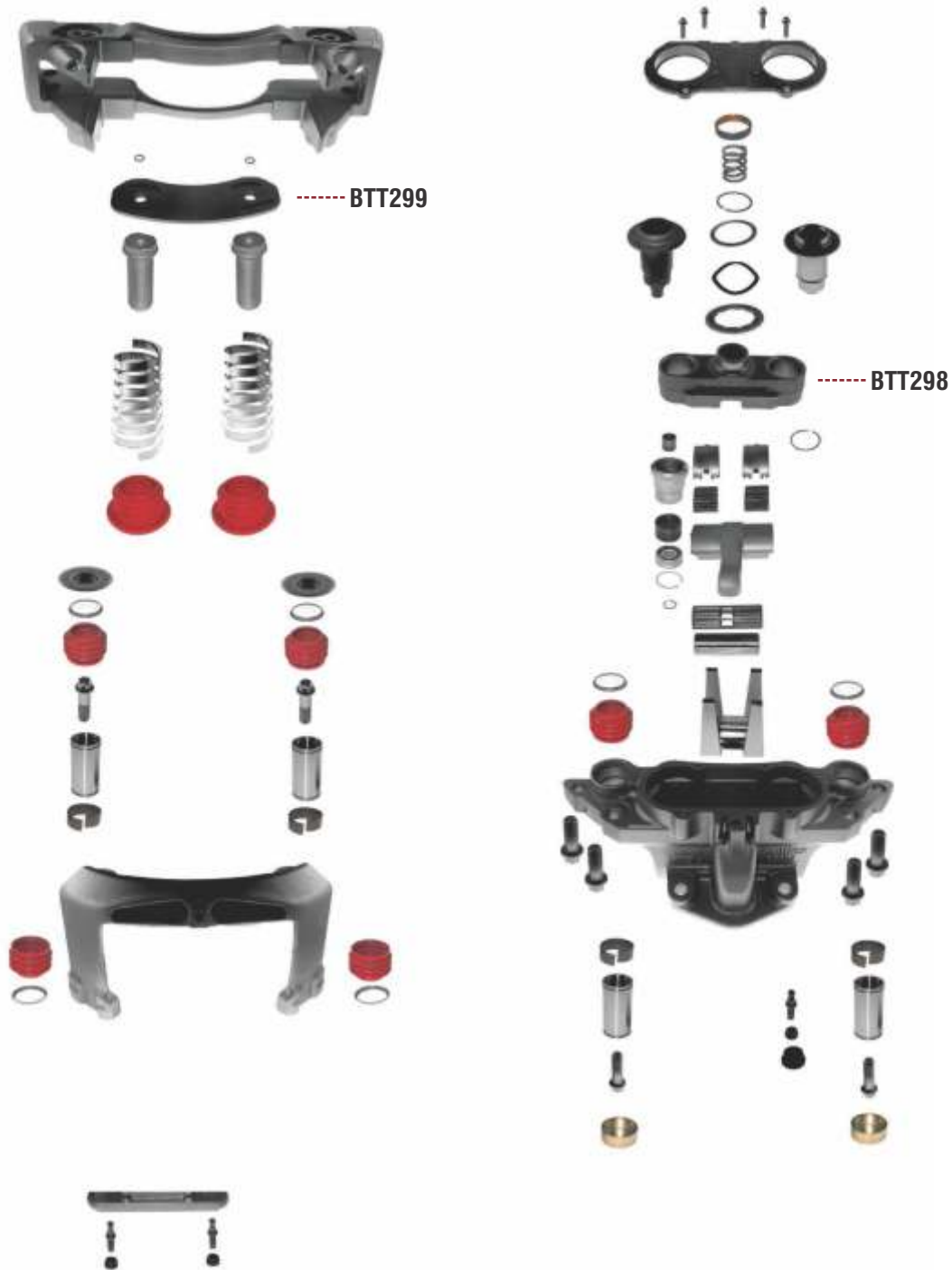


HALDEX SERIES



MODUL X





Kit No	: BTH90001
OEM No	: BrakingTech Only
Application	: Modul X-Gen 1 Type
Description	: Caliper Bridge Assembly Repair Kit
1- BTT298	Bridge
2- BTY31	Spring
3- BTS75	Washer
4- BTS76	Washer
5- BTS77	Washer



Kit No	: BTH90003
OEM No	: BrakingTech Only
Application	: Modul X-Gen 1 Type
Description	: Caliper Mechanism, Piston & Cover Kit
1- BTT300	Mechanism, Piston & Cover Kit



Kit No	: BTH90005
OEM No	: BrakingTech Only
Application	: Modul X-Gen 1 Type
Description	: Caliper Lever Pin
1- BTT302	Lever Pin



Kit No	: BTH90002
OEM No	: BrakingTech Only
Application	: Modul X-Gen 1 Type
Description	: Caliper Push Plate
1- BTT299	Push Plate



Kit No	: BTH90004
OEM No	: BrakingTech Only
Application	: Modul X-Gen 1 Type
Description	: Caliper Adjustment Sleeve
1- BTT301	Adjustment Sleeve (Driven)



Kit No	: BTH90006
OEM No	: BrakingTech Only
Application	: Modul X-Gen 1 Type
Description	: Caliper Mechanism Clamp
1- BTS120	Mechanism Clamp



MARK II



MARK III



MARK IV



Kit No	: BTH90007
OEM No	: BrakingTech Only
Application	: MARK II-III (2-3) Type
Description	: Caliper Mechanism, Piston & Cover Kit
1- BTT304	Mechanism, Piston & Cover Kit
2- BTC61	Screw
3- BTC62	Bolt Nut



Kit No	: BTH90009
OEM No	: BrakingTech Only
Application	: MARK II-III (2-3) Type
Description	: Caliper Mechanism Gear
1- BTT306	Mechanism Gear (Left)



Kit No	: BTH90011
OEM No	: BrakingTech Only
Application	: MARK II-III (2-3) Type
Description	: Caliper Tappet Repair Kit
1- BTT308	Tappet
2- BTSK11	Snap Ring



Kit No	: BTH90008
OEM No	: BrakingTech Only
Application	: MARK II-III (2-3) Type
Description	: Caliper Mechanism Gear
1- BTT305	Mechanism Gear (Right)



Kit No	: BTH90010
OEM No	: BrakingTech Only
Application	: MARK II-III (2-3) Type
Description	: Caliper Mechanism Metal Top Cover Kit
1- BTT307	Metal Top Cover
2- BTP49	Plug



Kit No	: BTH90012
OEM No	: BrakingTech Only
Application	: MARK II-III (2-3) Type
Description	: Caliper Lever
1- BTT309	Lever



Kit No	: BTH90013
OEM No	: BrakingTech Only
Application	: MARK II-III (2-3) Type
Description	: Caliper Bearing Kit
1- BTR30	Bearing Kit



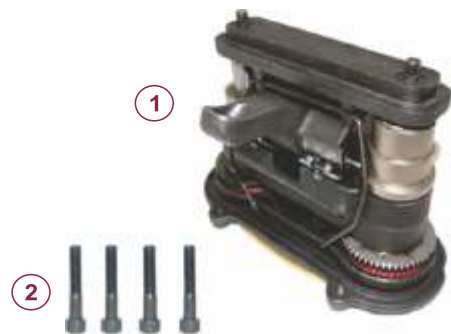
Kit No	: BTH90015
OEM No	: BrakingTech Only
Application	: MARK IV (4) Type
Description	: Caliper Mechanism Metal Top Cover Kit
1- BTT310	Metal Top Cover
2- BTT311	Adjusting Bolt
3- BTK111	Bolt Seal



Kit No	: BTH90017
OEM No	: BrakingTech Only
Application	: MARK II-III (2-3) Type
Description	: Caliper Bridge Assembly Repair Kit
1- BTT313	Bridge
2- BTS78	Circlip
3- BTS79	Circlip
4- BTY33	Spring



Kit No	: BTH90014
OEM No	: BrakingTech Only
Application	: MARK II-III (2-3) Type
Description	: Caliper Spring Set
1- BTY32	Spring Set



Kit No	: BTH90016
OEM No	: BrakingTech Only
Application	: MARK IV (4) Type
Description	: Caliper Mechanism, Piston & Cover Kit
1- BTT312	Mechanism, Piston & Cover Kit
2- BTC63	Screw



Kit No	: BTH90018
OEM No	: BrakingTech Only
Application	: MARK II-III (2-3) Type
Description	: Caliper Lever
1- BTS78	Circlip
2- BTS79	Circlip



Kit No : BTH90019

OEM No : BrakingTech Only

Application : MARK II-III (2-3) Type

Description : Caliper Dust Cover & Spring Repair Kit

1- BTK112 Tappet Dust Cover
2- BTY32 Protection Spring



Kit No : BTH90021

OEM No : BrakingTech Only

Application : MARK II-III (2-3) Type

Description : Caliper Mechanism

1- BTT315 Mechanism
2- BTC65 Screw Set



Kit No : BTH90023

OEM No : BrakingTech Only

Application : MARK II-III (2-3) Type

Description : Caliper Calibration Bolt

1- BTT317 Calibration Bolt (Right)
2- BTT318 Calibration Bolt (Left)



Kit No : BTH90020

OEM No : BrakingTech Only

Application : MARK II-III (2-3) Type

Description : Caliper Cover

1- BTT314 Cover
2- BTC64 Screw Set



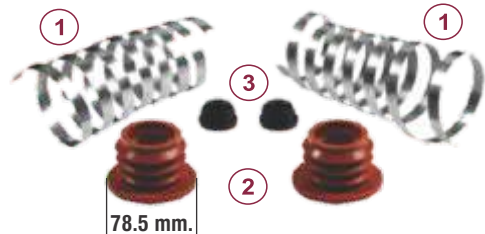
Kit No : BTH90022

OEM No : 87406

Application : MARK II-III (2-3) Type

Description : Caliper Guides & Seals Repair Kit

1- BTT316 Guide Pin
2- BTC66 Guide Pin Bolt
3- BTK113 Guide Pin Dust Cover
4- BTS80 Dust Cover Excluder
5- BTB26 Guide Pin Bush
6- BTS81 Steel Cover
7- BTP50 Plastic Plug



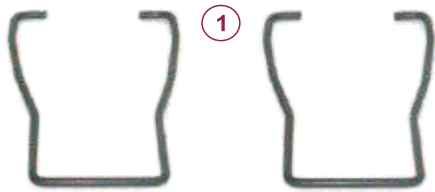
Kit No : BTH90024

OEM No : BrakingTech Only

Application : MARK II-III (2-3) Type

Description : Caliper Spring Repair Kit

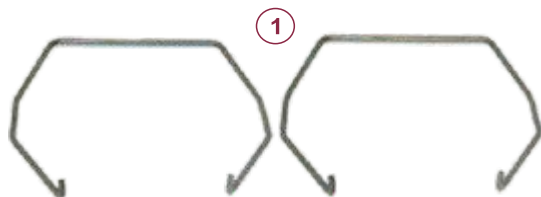
1- BTY32 Protection Spring
2- BTK112 Tappet Dust Cover
3- BTS81 Plastic Plug



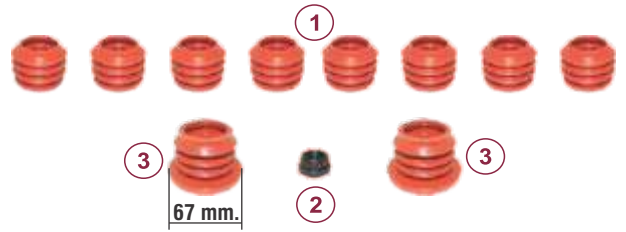
Kit No	: BTH90025
OEM No	: BrakingTech Only
Application	: MARK II-III (2-3) Type
Description	: Caliper Mechanism Clamp
1- BTT319	Mechanism Clamp



Kit No	: BTH90027
OEM No	: BrakingTech Only
Application	: Modul X-Gen 2 Type
Description	: Caliper Mechanism, Piston & Cover Kit
1- BTT320	Mechanism, Piston & Cover Kit
2- BTC67	Screw Set



Kit No	: BTH90029
OEM No	: BrakingTech Only
Application	: MARK IV (4) Type
Description	: Caliper Mechanism Clamp
1- BTT322	Mechanism Clamp



Kit No	: BTH90026
OEM No	: BrakingTech Only
Application	: Modul X-Gen 2 Type
Description	: Caliper Dust Covers & Seals Repair Kit
1- BTK113	Guide Pin Dust Cover
2- BTP51	Plug
3- BTK118	Tappet Dust Cover



Kit No	: BTH90028
OEM No	: BrakingTech Only
Application	: MARK IV (4) Type
Description	: Caliper Cover
1- BTT321	Cover
2- BTC68	Screw



Kit No	: BTH90030
OEM No	: BrakingTech Only
Application	: Modul X-Gen 2 Type
Description	: Caliper Lever Pin
1- BTT323	Pin



Kit No	: BTH90031
OEM No	: BrakingTech Only
Application	: MARK IV (4) Type
Description	: Caliper Adjusting Mechanism
1- BTT324	Mechanism
2- BTS82	Circlip



Kit No	: BTH90035
OEM No	: 91012
Application	: MARK IV (4) Type
Description	: Caliper Guide & Seals Repair Kit
1- BTT326	Guide Pin Ø35x64 mm.
2- BTC69	Guide Pin Bolt M14x2x42 mm.
3- BTK113	Guide Pin Dust Cover
4- BTB27	Guide Pin Bush
5- BTS83	Steel Cap Ø42x22,5 mm.
6- BTS84	Steel Cap Ø56x12,5 mm.
7- BTP52	Plug



Kit No	: BTH90033
OEM No	: BrakingTech Only
Application	: Modul X-Gen 2 Type
Description	: Caliper Lever
1- BTT328	Lever



Kit No	: BTH90032
OEM No	: BrakingTech Only
Application	: MARK IV (4) Type
Description	: Caliper Lever
1- BTT325	Lever



Kit No	: BTH90036
OEM No	: 89541
Application	: MARK IV (4) Type
Description	: Caliper Guide & Seals Repair Kit
1- BTT327	Guide Pin Ø35x70 mm.
2- BTC70	Guide Pin Bolt M14x2x53 mm.
3- BTK113	Guide Pin Dust Cover
4- BTS85	Dust Cover Retainer Ø39,5x4 mm.
5- BTB27	Guide Pin Bush
6- BTS86	Steel Cap Ø57,5x40,5 mm.
7- BTS84	Steel Cap Ø56x12,5 mm.
8- BTP52	Plug



Kit No	: BTH90037
OEM No	: BrakingTech Only
Application	: MARK IV (4) Type
Description	: Caliper Adjuster Bolt & Seals Repair Kit
1- BTP52	Plug
2- BTC71	Adjusting Bolt
3- BTK117	Adjusting Bolt Seal



1

Kit No	: BTH90038
OEM No	: BrakingTech Only
Application	: MARK IV (4) Type
Description	: Caliper Adjustment Sleeve
1- BTT329	Adjustment Sleeve (Driving)



1

Kit No	: BTH90039
OEM No	: BrakingTech Only
Application	: MARK IV (4) Type
Description	: Caliper Adjustment Sleeve
1- BTT330	Adjustment Sleeve (Driven)



3

7

6

5

4

1

2

Kit No	: BTH90034
OEM No	: 93299
Application	: Modul X-Gen 2 Type
Description	: Caliper Guide & Seals Repair Kit
1- BTT331	Guide Pin Ø35x64 mm.
2- BTC72	Guide Pin Bolt M14x2x42 mm.
3- BTK113	Guide Pin Dust Cover
4- BTB27	Guide Pin Bush
5- BTS83	Steel Cap Ø42x22,5 mm.
6- BTS84	Steel Cap Ø56x12,5 mm.
7- BTP52	Plug



1

Kit No	: BTH90040
OEM No	: BrakingTech Only
Application	: Modul X-Gen 2 Type
Description	: Caliper Mechanism Clamp
1- BTS121	Mechanism Clamp



1

Kit No	: BTH90041
OEM No	: BrakingTech Only
Application	: Modul X-Gen 2 Type
Description	: Caliper Mechanism Shield Plate
1- BTS122	Shield Plate



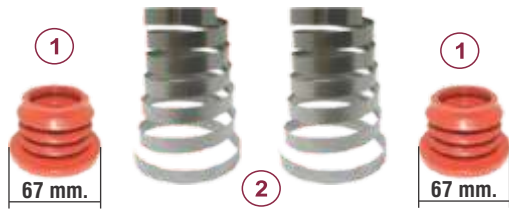
1

2

3

4

Kit No	: BTH90042
OEM No	: BrakingTech Only
Application	: Modul X-Gen 2 Type
Description	: Caliper Bridge Assembly Repair Kit
1- BTT334	Bridge Assembly
2- BTY34	Spring
3- BTS87	Washer
4- BTS88	Washer



Kit No	: BTH90043
OEM No	: BrakingTech Only
Application	: Modul X-Gen 2 Type
Description	: Caliper Dust Cover & Spring Repair Kit
1- BTK118	Tappet Dust Cover
2- BTY35	Protection Spring



Kit No	: BTH90045
OEM No	: BrakingTech Only
Application	: Modul X-Gen 2 Type
Description	: Caliper Roller Bearing Kit
1- BTR32	Roller Bearing Kit



Kit No	: BTH90047
OEM No	: BrakingTech Only
Application	: Modul X-Gen 2 Type
Description	: Caliper Adjusting Mechanism
1- BTT335	Adjusting Mechanism



Kit No	: BTH90044
OEM No	: BrakingTech Only
Application	: Modul X-Gen 2 Type
Description	: Caliper Roller Bearing Kit
1- BTR31	Roller Bearing Kit



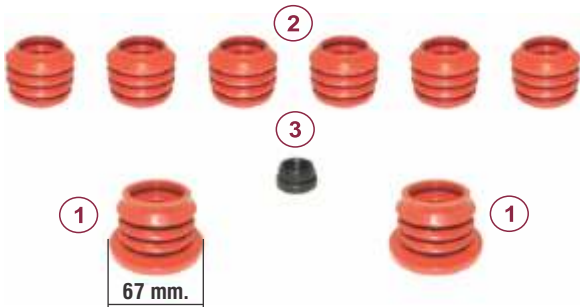
Kit No	: BTH90046
OEM No	: 94892
Application	: Modul X-Gen 2 Type
Description	: Caliper Adjusting Bolt
1- BTC73	Adjusting Bolt



Kit No	: BTH90048
OEM No	: BrakingTech Only
Application	: Modul X-Gen 2 Type
Description	: Caliper Adjustment Sleeve
1- BT336	Adjustment Sleeve (Driven)



Kit No	: BTH90049
OEM No	: BrakingTech Only
Application	: Modul X-Gen 2 Type
Description	: Caliper Gear Wheel
1- BTT337	Gear Wheel



Kit No	: BTH90051
OEM No	: BrakingTech Only
Application	: Modul X-Gen 1 Type
Description	: Caliper Dust Cover & Seals Repair Kit
1- BTK113	Tappet Dust Cover
2- BTK118	Guide Pin Dust Cover
3- BTP53	Plug



Kit No	: BTH90053
OEM No	: BrakingTech Only
Application	: Modul X-Gen 2 Type
Description	: Caliper Calibration Bolt
1- BTT341	Calibration Bolt (Piston Ver.)



Kit No	: BTH90050
OEM No	: BrakingTech Only
Application	: Modul X-Gen 2 Type
Description	: Caliper Adjustment Sleeve
1- BTT338	Adjustment Sleeve (Driving)



Kit No	: BTH90052
OEM No	: BrakingTech Only
Application	: MARK IV (4) Type
Description	: Caliper Calibration Bolt
1- BTT139	Calibration Bolt (With Flange)



Kit No	: BTH90054
OEM No	: BrakingTech Only
Application	: Modul X-Gen 1 Type
Description	: Caliper Calibration Bolt
1- BTT340	Calibration Bolt



①

Kit No	: BTH90055
OEM No	: BrakingTech Only
Application	: MARK IV (4) Type
Description	: Caliper Rush Plate
1- BTT342	Rush Plate



①

Kit No	: BTH90057
OEM No	: BrakingTech Only
Application	: MARK IV (4) Type
Description	: Caliper Roller Bearings
1- BTR34	Roller Bearings



①

Kit No	: BTH90056
OEM No	: BrakingTech Only
Application	: MARK IV (4) Type
Description	: Caliper Roller Bearings
1- BTR33	Roller Bearings



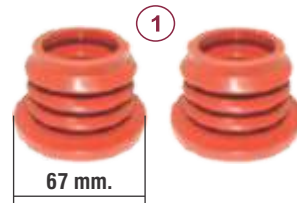
Kit No	: BTC0101108
OEM No	: 90636
Application	: 22.5" Rim, Saf, MODUL X GEN 2, Trailer Axle
Description	: Caliper Carrier Haldex



①

②

Kit No	: BTH90058
OEM No	: 90673
Application	: MARK IV (4) Type
Description	: Caliper Pad Retainer Repair Kit
1- BTT343	Retainer
2- BTC74	Screw



①

67 mm.

Kit No	: BTH90068
OEM No	: BrakingTech Only
Application	: Modul X-Gen 2 Type, Mark IV
Description	: Caliper Tappet Dust Cover Kit
1- BTK118	Dust Cover



①

78.5 mm.

Kit No	: BTH90069
OEM No	: BrakingTech Only
Application	: Mark II, Mark III
Description	: Caliper Tappet Dust Cover Kit
1- BTK112	Dust Cover



①

Kit No	: BTH90066
OEM No	: 91019
Application	: Module X
Description	: Caliper Cap Set
1- BTS93	Caliper Metal Tap (Ø42x28mm)